

# SUDOKU NEROBIANCO— & SUDOKU

Mario Bellini, 2007

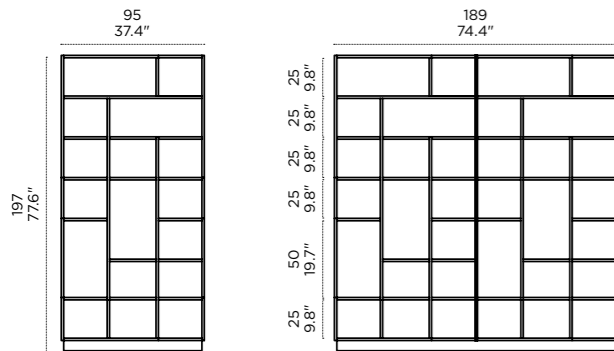
Sudoku est une énigme composée d'éléments inégaux qui, assemblés horizontalement et verticalement, créent un volume très original. Grâce aux panneaux latéraux qui s'encastrent sans créer de double cloison, un système mural continu peut être conçu avec plusieurs modules. Dans la version en aluminium et en bois noir et blanc, les surfaces en miroirs et zébrées créent un jeu de pleins et de vides dans une mise en scène surprenante.

**SUDOKU** — Sudoku è un enigma compositivo di elementi irregolari che, assemblati orizzontalmente e verticalmente, creano un volume di grande originalità. Grazie ai fianchi accostabili senza raddoppio con più moduli si può creare un sistema a parete continuo. Nella versione in alluminio e legno nero Bianco, le superfici specchianti e zebbrate della libreria creano un gioco di pieni e di vuoti dal sorprendente effetto scenografico.

**SUDOKU** — Sudoku is a puzzle of unequal elements that create a unique space when horizontally and vertically assembled. Its sides, easily coupled without overlap, allow for the creation of continuous walls by simply adding more modules. In the aluminium and black and white wood version, the reflective and striped surfaces play on the empty and full spaces to create a striking visual effect.

**SUDOKU** — Sudoku ist ein Puzzle aus ungleichen Elementen, die horizontal und vertikal montiert werden, wodurch ein Volumen von großer Originalität entsteht. Da die offenen Seiten einfach verbunden werden können, kann mit mehreren Modulen eine durchgehende Wand geschaffen werden, ohne dass Dopplungen entstehen.

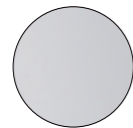
#### Misure e finiture / Sizes and finishes



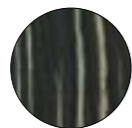
Profondità/Depth = 26 cm/10.2"

Le spalle, di mezza profondità rispetto alle mensole, permettono di accostare più moduli senza raddoppiare lo spessore dei fianchi/The sides, whose depth is half that of the shelves, allow to connect several modules without doubling the thickness  
Download high resolution photographs of this product from [www.photos.horm.it](http://www.photos.horm.it)

Sudoku  
Nerobianco

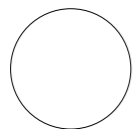


alluminio  
aluminium

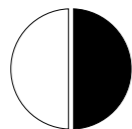


legno nero Bianco  
blackwhite wood

Sudoku



laccato bianco  
white lacquer



laccato bianco e nero  
black and white lacquer



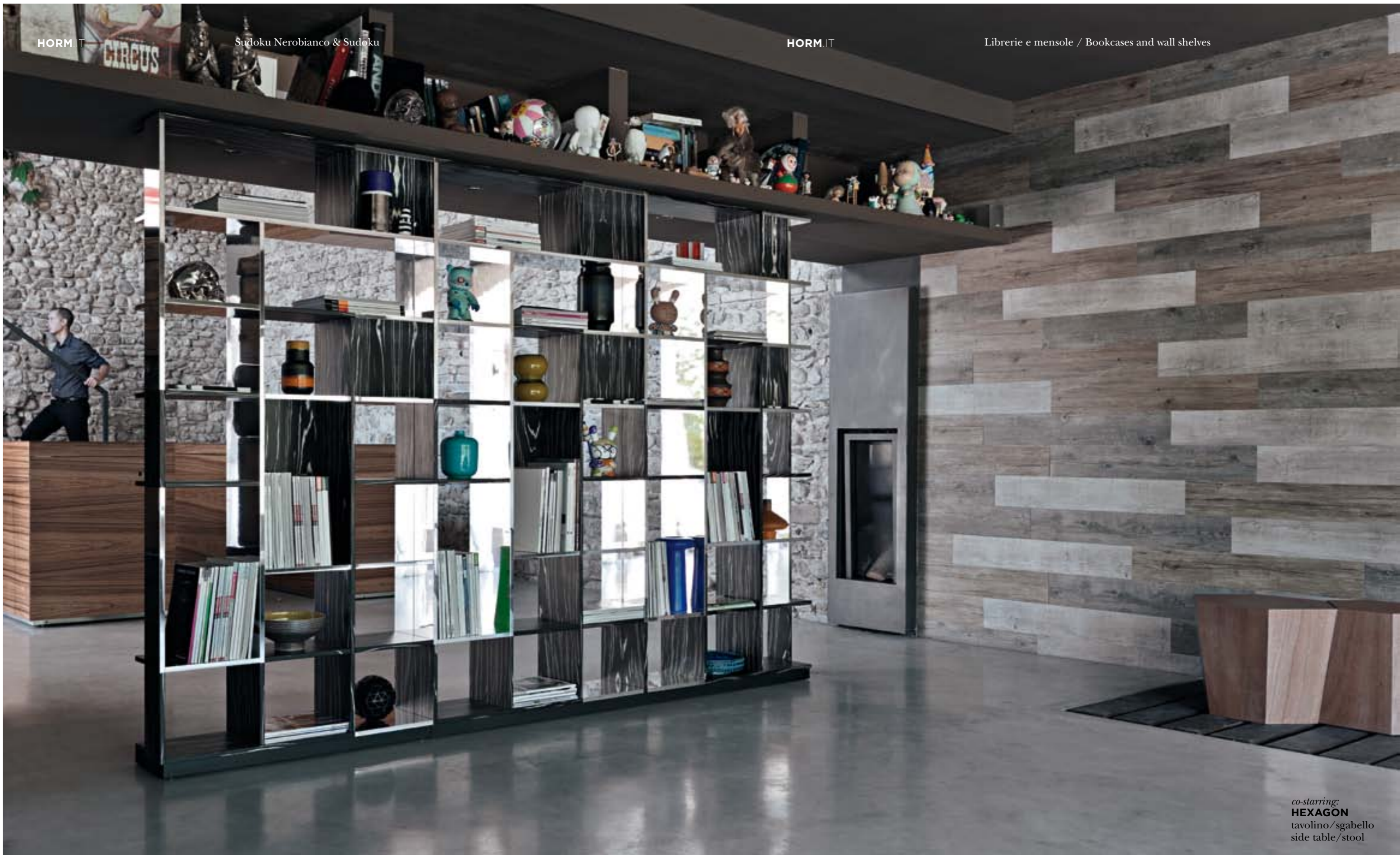
HORM.IT

Sudoku Nerobianco & Sudoku

HORM.IT

Librerie e mensole / Bookcases and wall shelves





co-starring:  
**HEXAGON**  
tavolino/sgabello  
side table/stool

HORM.IT

The Sequel

HORM.IT

The Industrial Loft



**SUDOKU FULL WHITE**  
Libreria / Bookshelf

**LEON ON THE BASE**  
Madia / Sideboard

**AUTOREGGENTE**  
Tavolo / Table

**STACK**  
Sedia / Chair

**DOPPIA LUCE TOTEM**  
Art Lamp

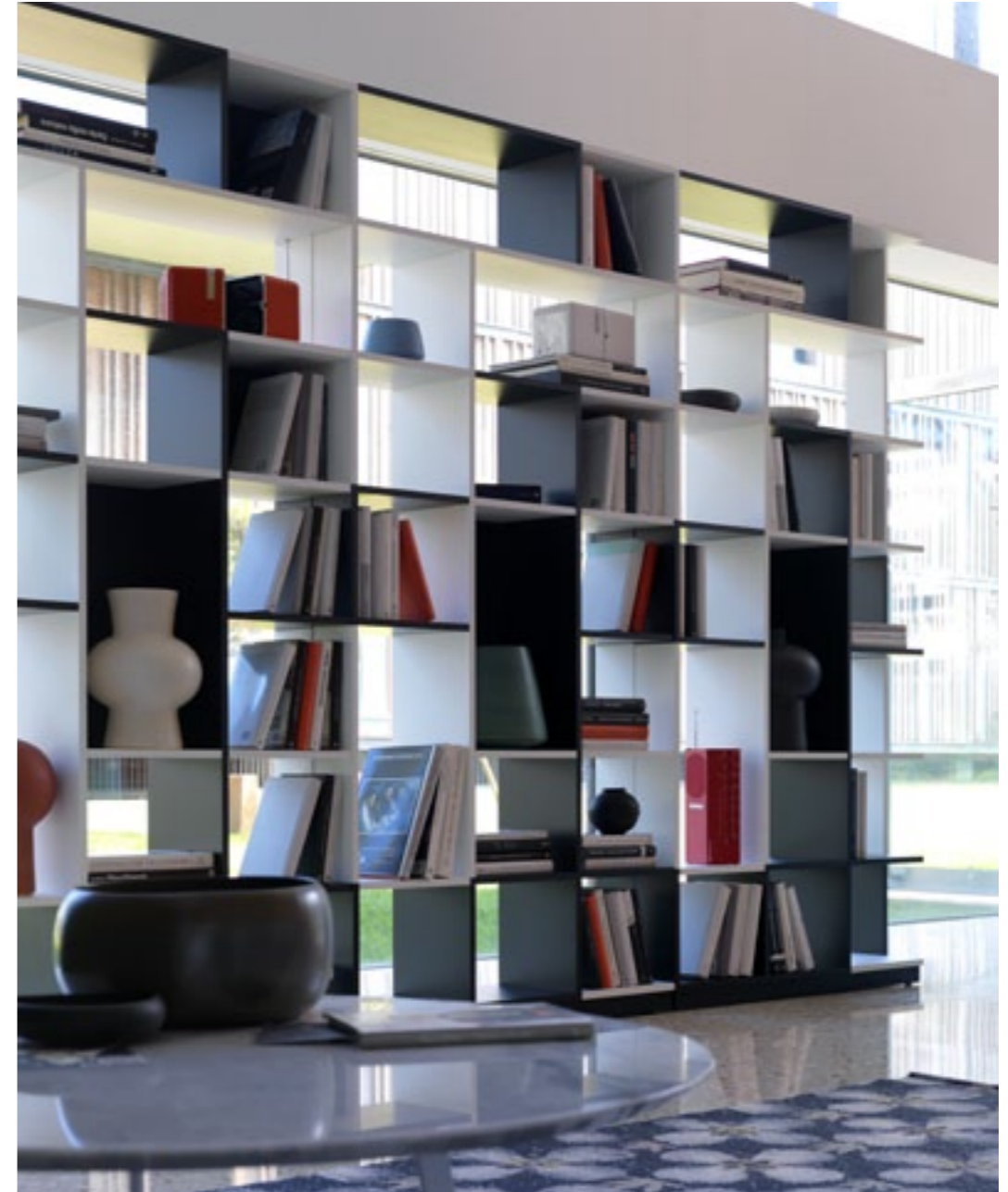
HORM.IT

The Sequel

HORM.IT

The Penthouse





**MILOS**  
Poltrona / Armchair

**HEXAGON**  
Sgabello\_Tavolino / Stool\_Side Table

**SUDOKU**  
Libreria / Bookshelf